

PLEASE DO NOT WRITE ON THE TEST. ONLY WRITE ON THE ANSWER SHEET

1. Name 2 late stage Alzheimer's signs and symptoms. 2 pts.
2. What layers of the skin does a partial-thickness burn involve? 1 pt.
3. What does the appearance of a partial thickness burn look like? 1 pt.
4. Multiple Sclerosis is characterized by what signs and symptoms. (Name 3) 3 pts.
5. What age and gender is most frequently affected with Graves disease? 1 pt.
6. What are the effects of IgE bound to mast cells after the release of histamine and chemical modifier? 1 pt.
7. What hypersensitivity would you expect to see with the above reaction? 1 pt.
8. Which lobe of the brain controls reading? 1 pt.
9. Which lobe of the brain controls speech? 1 pt.
10. Which lobe of the brain controls hearing? 1 pt.
11. Which motor system is affected with Parkinson's? 1 pt.
12. What is the normal treatment to reduce motor impairment in Parkinson's patients. 1 pt.
13. Exophthalmos is characterized and noted for protruding eyes, decreased blinking and decreased eye movements. What autoimmune disease is this related to? 1 pt.
14. What physiological reason causes exophthalmos? 1 pt.
15. Name two signs and symptoms of Multiple Sclerosis if the cranial nerves are affected. 2 pts.
16. What is the rule of nine's used for? 1 pt.
17. What is the name of the chart which is the same as the rule of nine's, only for children? 1 pt.
18. With Parkinson's a decreased number of (a) \_\_\_\_\_ in the substantia nigra secrete (b) \_\_\_\_\_ which leads to an imbalance between excitation and inhibition. 2 pts.
19. Which motor system is affected with Parkinson's? 1 pt.

20. Name 3 of the early signs and symptoms of Parkinson's Disease. 3 pts.
21. What is the normal treatment to reduce motor impairment in Parkinson's patients 1 pt
22. Why is dopamine not used in treatment of Parkinson's 1 pt.
23. Alzheimer's patients can have symptoms develop anywhere from 10-20 years. Name 3 early stage signs. 3 pts.
24. Which lobe controls speech? 1 pt.
25. Which lobe controls smell? 1 pt.
26. Which lobe controls taste 1 pt.
27. Which lobe controls vision? 1 pt.
28. What are three of the 4 most common effects of a burn injury? 3 pts.
29. What is the responsibility of mast cells in the immune system? 1 pt.
30. What do the memory T cells do in the immune system? 1 pt.
31. What do cytotoxic (Killer T cells) do in the immune system. 1 pt.



32. What is the picture above comparing? 5 pts.



33.

What type of skin lesion is this a picture of? 5 pts.



34.

What type of skin lesion is this a picture of? 3 pts.

35. Below are 4 pictures of complications of AIDS. Please name them. 2 pts ea



a.



b.



c.

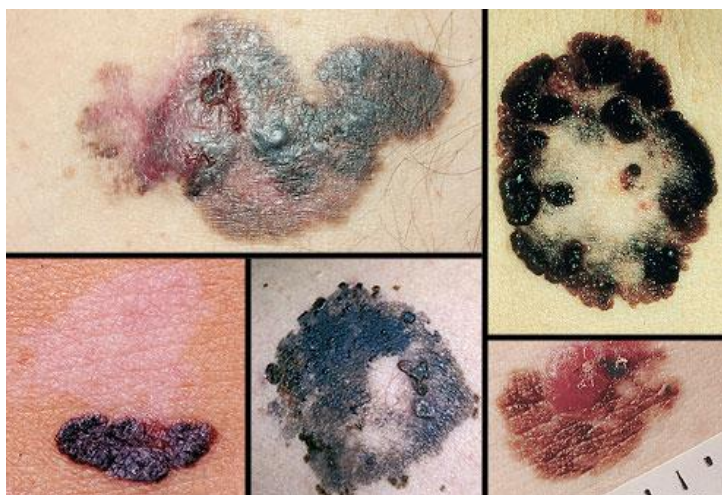


d.

36. Name the different types of cancerous lesions below. 2 pts ea



a.



b.

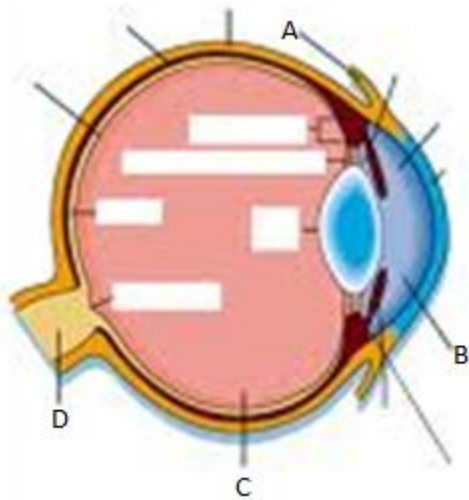


c.

37. A man comes to the emergency room with burns covering his left arm, back and posterior left leg. What is the total body area percentage burned? 1 pt.
38. A 4 year old male comes to the clinic with a case of Rhus dermatitis. What type of immunologic reaction caused this presentation?
39. If a person's brain wave's show the pattern below what is the person's most likely state? 1 pt.



40. What disease is characterized by abnormal muscle tone, reflexes or motor development and coordination? 1 pt.
41. What disease is characterized by abnormal muscle tone, reflexes or motor development and coordination? 1 pt.
42. Which disease may be diagnosed by evidence of demyelination of the brain or spinal cord and chronic inflammation? 1 pt.
43. Which ion is the greatest factor in determining resting membrane potential? 1 pt.
44. The major inhibitory neurotransmitter of the central nervous system is? 1 pt.
45. Glaucoma results in increased pressure in which of the following structures? 1 pt.



46. Parasympathetic ganglia are located where? 1 pt.