

Team Name: \_\_\_\_\_

Student Name(s): \_\_\_\_\_

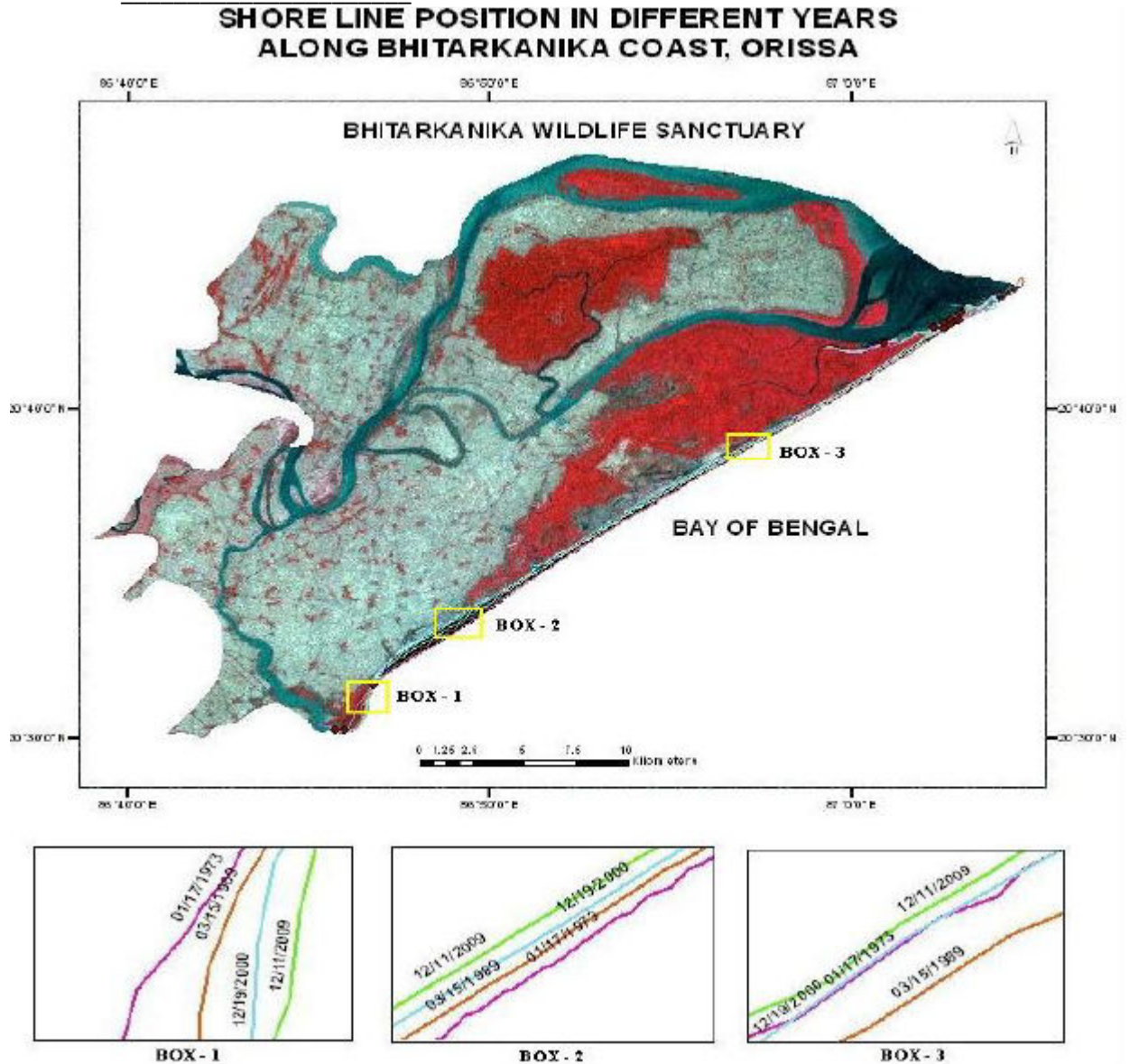


Figure 1: Shoreline position in different observation years Image from Chand and Acharya (2010) Shoreline change and sea level rise along coast of Bhitarkanika wildlife sanctuary, Orissa: An analytical approach of remote sensing and statistical techniques, *International Journal of Geomatics and Geosciences*, 1(3): 436-455.

Team Name: \_\_\_\_\_

Student Name(s): \_\_\_\_\_

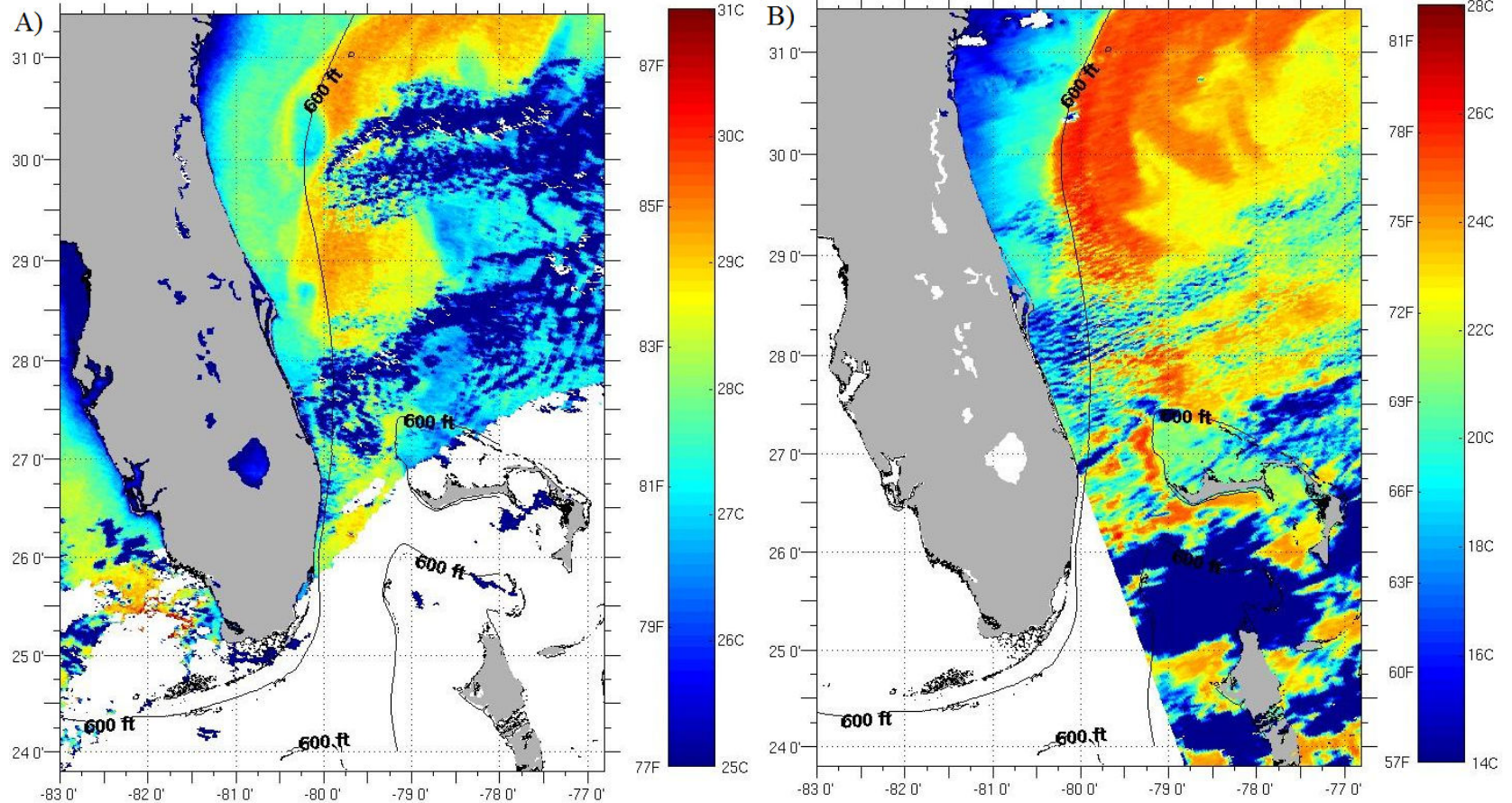


Figure 2: Sea surface temperature of the Florida Coast on A) October 4<sup>th</sup>, 2011 and January 31<sup>st</sup>, 2012. Images from the NOAA AVHRR and MODIS-Aqua Satellites and downloaded from the Rutgers Coastal Ocean Observation Lab:

[http://marine.rutgers.edu/mrs/sat\\_data/?nothumbs=0](http://marine.rutgers.edu/mrs/sat_data/?nothumbs=0)

Team Name: \_\_\_\_\_  
Student Name(s): \_\_\_\_\_  
\_\_\_\_\_

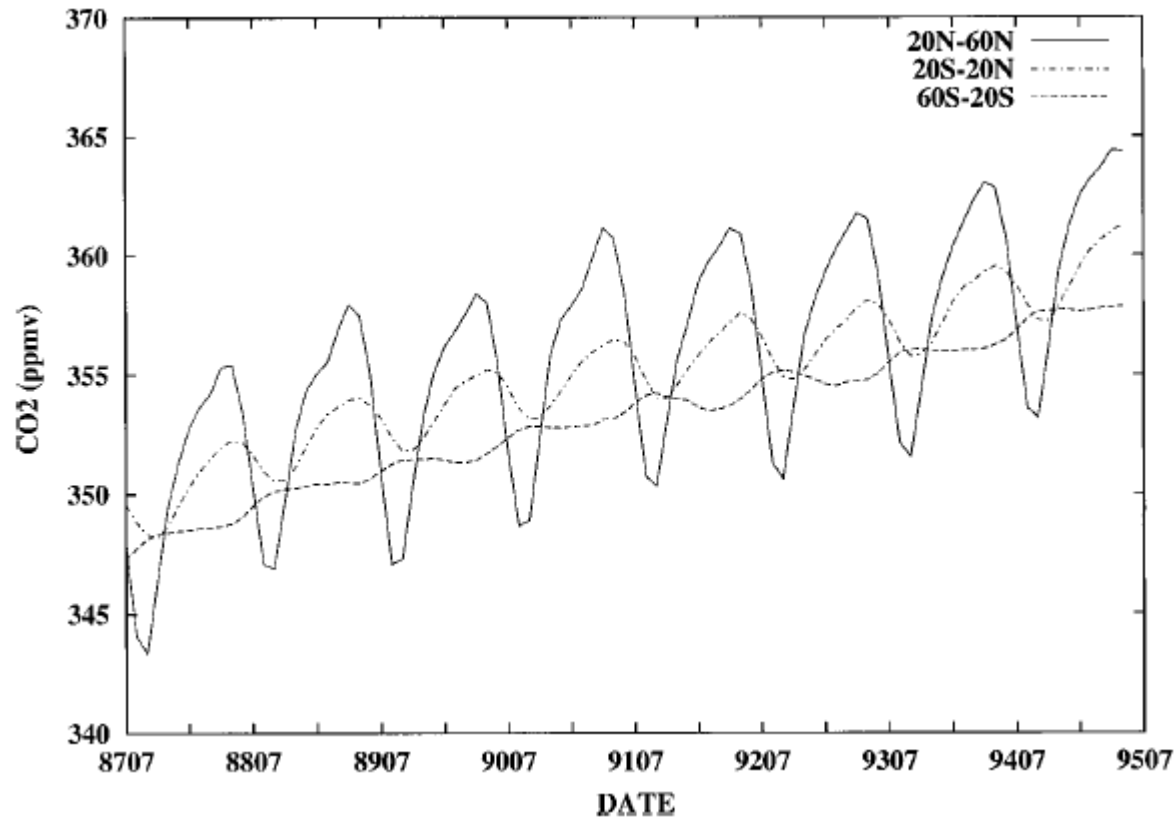


Figure 3: The CO<sub>2</sub> surface concentration seasonal variation for the latitude zones 60°-20°N, 20°N-20°S, 20°-60°S, which shows a trend of an increase of 0.4% yr<sup>-1</sup>. Image taken from Chedin, Serrar, Armante, Scott, & Hollingsworth (2002) Signatures of Annual and Seasonal Variations of CO<sub>2</sub> and Other Greenhouse Gases from Comparison between NOAA TOVS Observations and Radiation Model Simulations, *Journal of Climate*, 15:95-116.

Team Name: \_\_\_\_\_

Student Name(s): \_\_\_\_\_

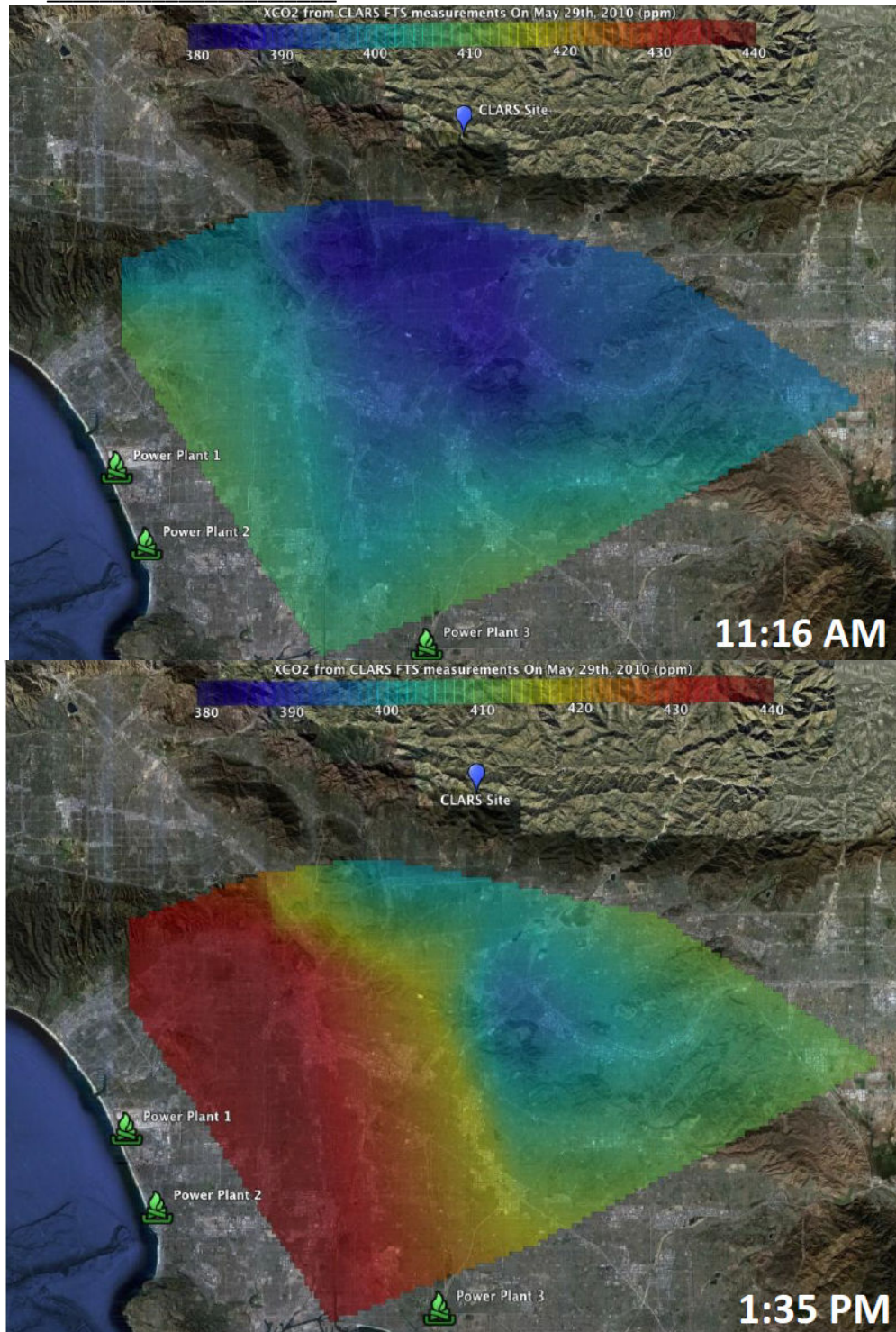


Figure 4: The CO<sub>2</sub> concentration in the LA basin on May 29<sup>th</sup> 2010 at 11:16 am and 1:35 pm. Images from presentation by Fu et al. Remote Sensing of Spatial Distributions of Greenhouse Gases in the Loas Angles Basin:

[http://www.arb.ca.gov/research/calnex2010/da\\_workshop\\_may2011/Tuesday/arb\\_2011\\_dejian\\_fu.pdf](http://www.arb.ca.gov/research/calnex2010/da_workshop_may2011/Tuesday/arb_2011_dejian_fu.pdf)

Team Name: \_\_\_\_\_  
 Student Name(s): \_\_\_\_\_

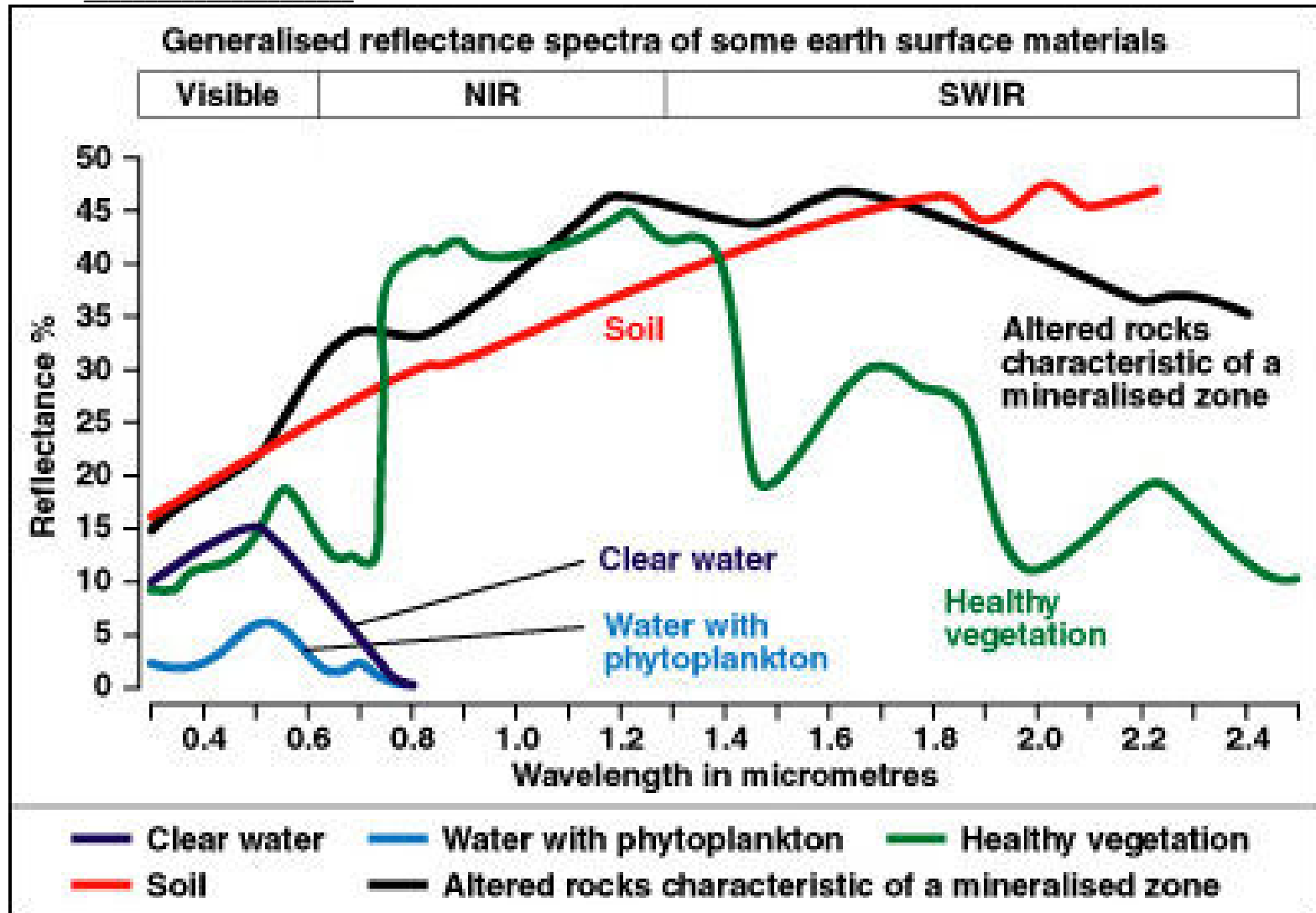


Figure 5: Generalized reflectance spectra of common earth surface materials. Image from the Remote Sensing Applications Consultants website: <http://www.rsac1.co.uk/rs.html>

Team Name: \_\_\_\_\_

Student Name(s): \_\_\_\_\_

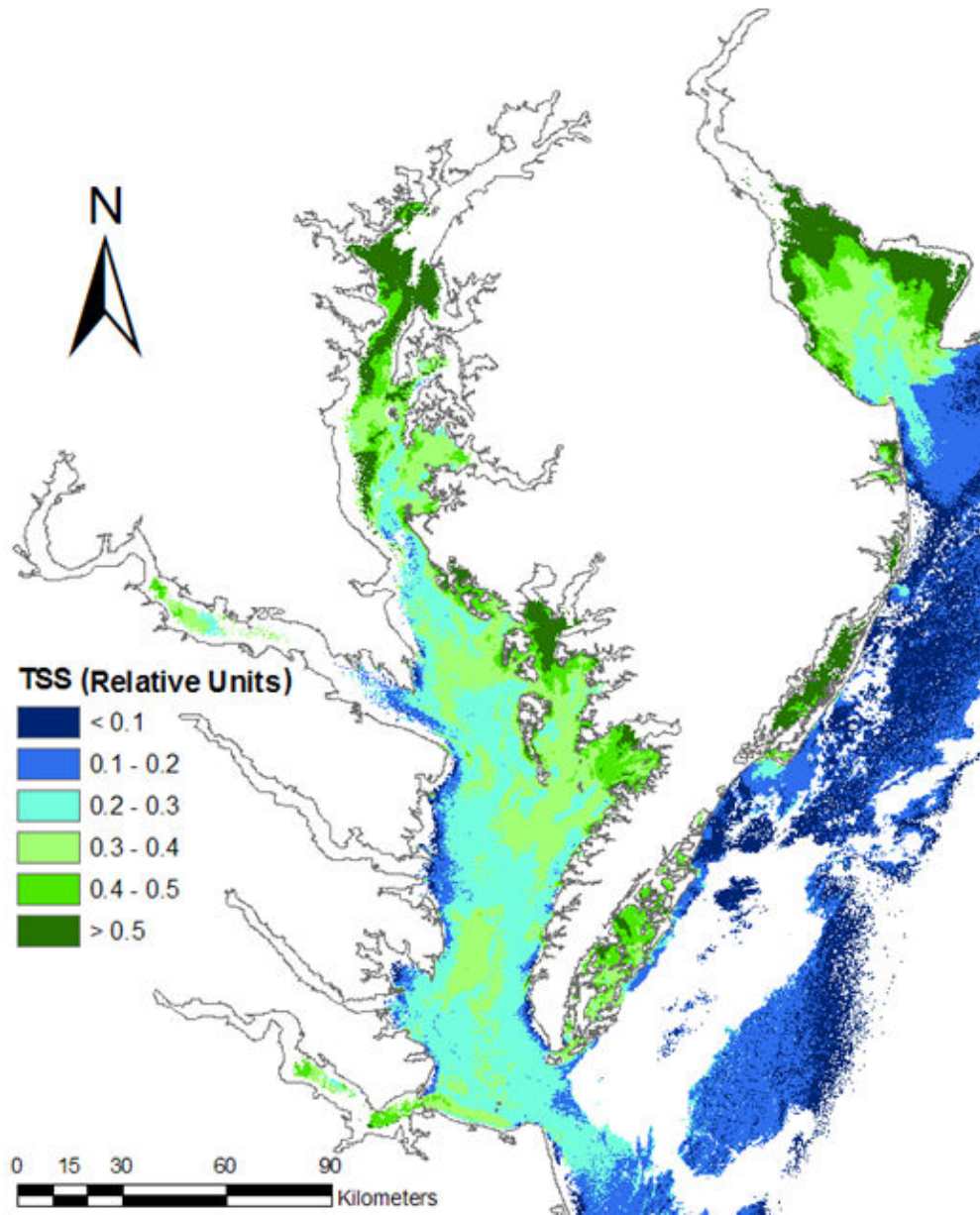


Figure 6: Total Suspended Solids (TSS) in the Chesapeake Bay on June 30<sup>th</sup> 2006

Team Name: \_\_\_\_\_

Student Name(s): \_\_\_\_\_

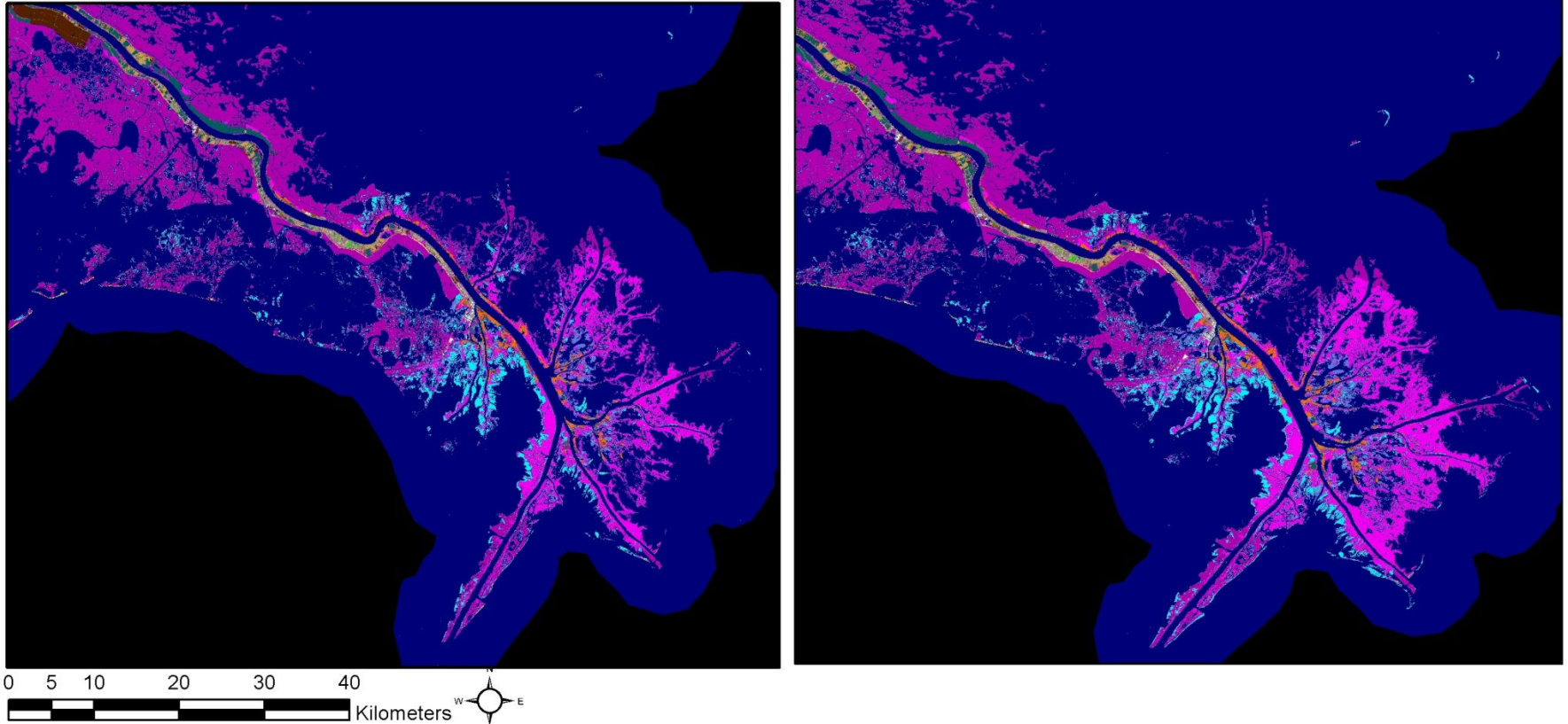


Figure 7: Land cover of the Mississippi River Delta before and after hurricane Katrina. Land cover images downloaded from NOAA Coastal Services Center: <http://www.csc.noaa.gov/crs/lca/katrina/>