

Answer Sheet

Part 1: AAA California Road Map
(40 points)

- 1) T 53
- 2) I-40 OR INTERSTATE 40
- 3) 12:00 pm or NOON ***
- 4) 207 mi
- 5) 3 hrs 7 min
- 6) AÑO NUEVO
- 7) SRI, STATE ROUTE 1, CA 1
- 8) PRINCIPAL & /OR UNDIVIDED
- 9) DEATH VALLEY NATL PARK
- 10) 285° (RANGE 280°-290°) ***
- 11) WEST
- 12) 14776'
- 13) 87 mi (RANGE 82 mi - 92 mi)
- 14) REST AREA FULL FACILITIES (REST AREA = 1 pt)
- 15) MERCED RIVER
- 16) HUMBOLDT COUNTY
- 17) HUMBOLDT REDWOODS STATE PARK
- 18) RICHMOND - SAN RAFAEL BRIDGE
- 19) TOLL
- 20) WEST BOUND ***

Road Map Score

Answer Sheet

Part 2: Topographic Map
(40 points)

- 21) SW 1/4 NW 1/4, S12, T25, R2E OR NW 1/4 NW 1/4, S12, T25, R2E
- 22) 40° 18' 25" (RANGE 40° 15' 25" TO 40° 21' 25")
- 23) 123° 54' 30" (RANGE 123° 51' 30" TO 123° 57' 30")
- 24) 41'
- 25) .68' / 1000' OR .675' / 1000' ...
- 26) ~~WEST~~ OR NORTHWEST, NORTH = 1 pt
- 27) 384'
- 28) SECONDARY HIGHWAY OR HARD SURFACE
- 29) FOOT BRIDGE
- 30) 18 1/2°
- 31) WEST QUADRANGLE
- 32) 1969
- 33) SECTOR 4, 4, OR WEST SECTOR
- 34) HORIZONTAL CONTROL STATION
- 35) 40'
- 36) 17.5' / 100' (RANGE 17' / 100' - 18' / 100')
- 37) S 8° W (RANGE S 5° W - S 11° W)
- 38) BULL CREEK QUAD
- 39) WOODLAND
- 40) SAND OR MUD

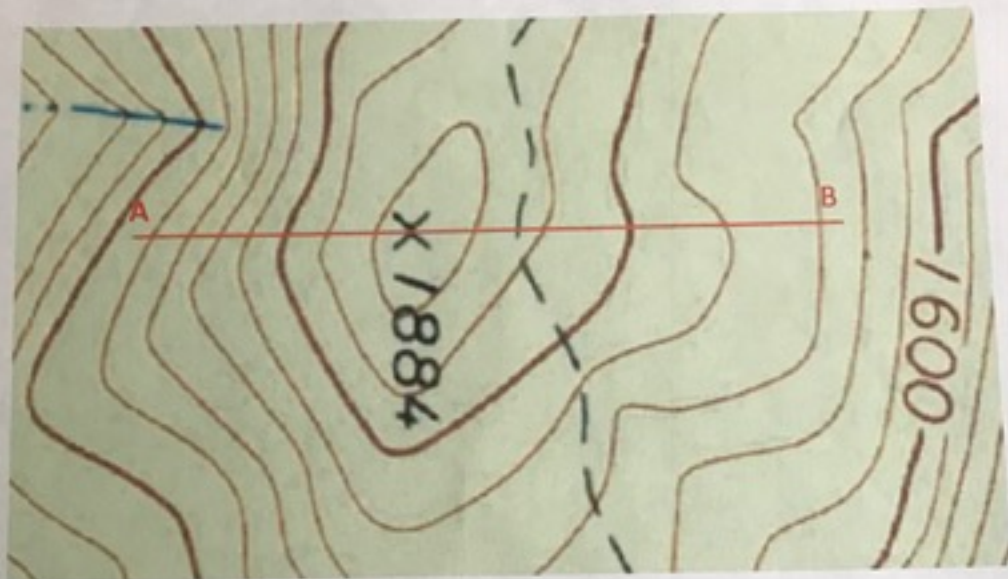
Topo Map Score

KEY

School Name _____

Team # _____

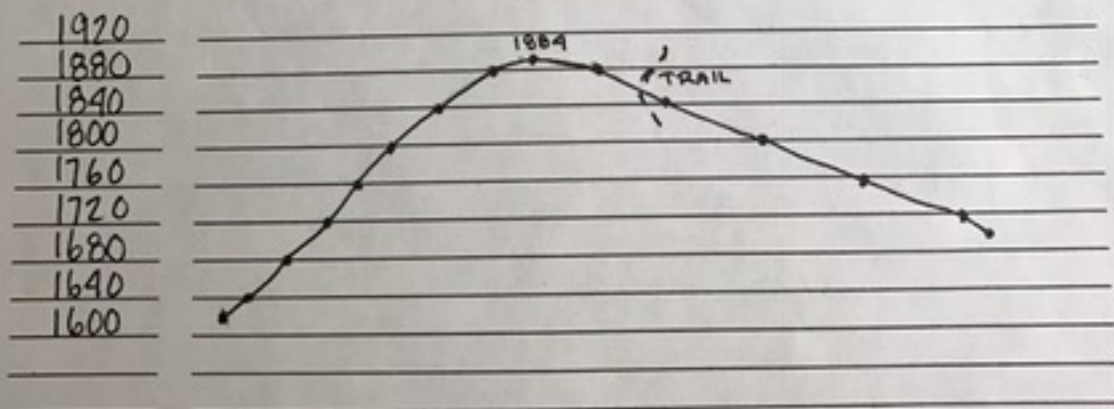
Part 3: Map Profile (30 points)



Elevation

A

B



Contour interval 40'

Part 4: Student Map
(28 points)

The square below represents one section (one square mile).
Please draw the requested features within the square.
The scale is 1 : 15840 which means that 1" : 1/4 mile or that 1" : 15840".

