

# SilverNight's Forestry Practice Test (NJ)

Directions: Each slide is timed. You will have 35 seconds to identify each tree and 1 minute to answer the related questions. Mark your answers on the answer sheet. There will be general tree ecology questions at the end. Those slides are each 2 minutes long. The entire test should take approximately 40 minutes. Good luck.



# 1. Identify This Specimen



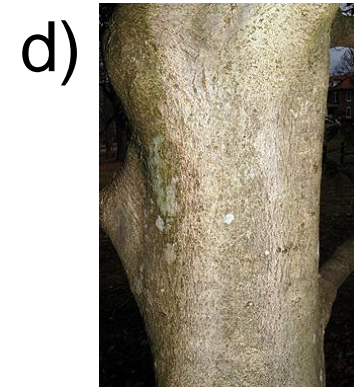
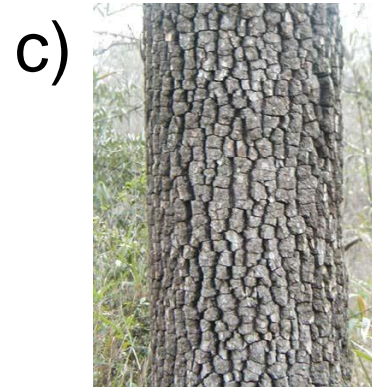
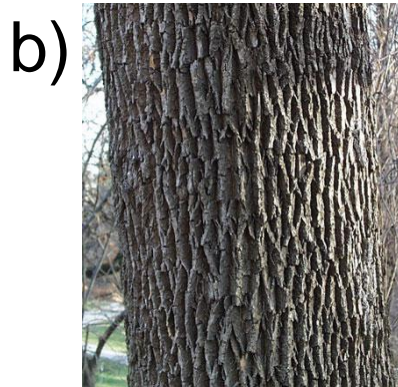
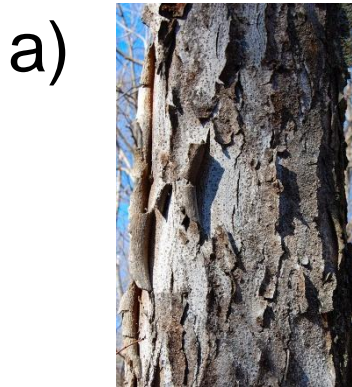
- A. Which of the following describes this tree's leaves?
- a) Opposite and entire
  - b) Alternate and entire
  - c) Opposite and serrated
  - d) Alternate and serrated
- B. Why can't many garden plants grow under this tree?
- a) The thick canopy of leaves on this tree completely blocks all sunlight from reaching any plants below
  - b) Its roots secrete a toxic substance that prevent other plants from growing near it
  - c) Its spreading roots absorb all the nutrients from the soil
  - d) Its roots seek out and take in lots of sulfur, making other plants deficient in this essential element
  - e) None of the above



## 2. Identify This Specimen



A. Which of the following is an image of the bark of this tree?



B. It is the state tree of:

- a) Delaware
- b) Connecticut
- c) Massachusetts
- d) New Jersey
- e) Maryland



### 3. Identify This Specimen



A. Which of the following statements about the fruit of this tree is false?

- a) It has a pleasant and mild odor
- b) It is edible for the most part
- c) Few native animals make use of it as a food source
- d) Eating it may cause vomiting

B. Native Americans used the wood to make

- a) Swords
- b) Shoes
- c) Medicine
- d) Bows

# 4. Identify This Specimen





A. Which of the following is an image of a mature cone of this tree?

a)



b)



c)



d)



B. This tree prefers which type of soil?

a) Well-drained, dry soils

b) Wetlands and marshes

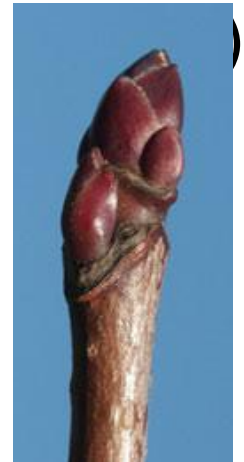
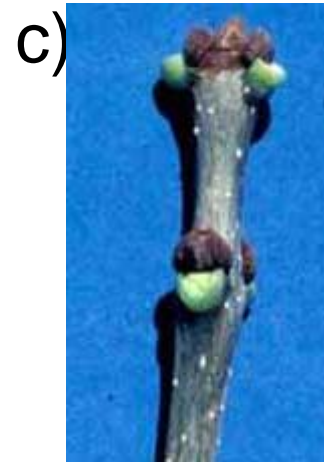
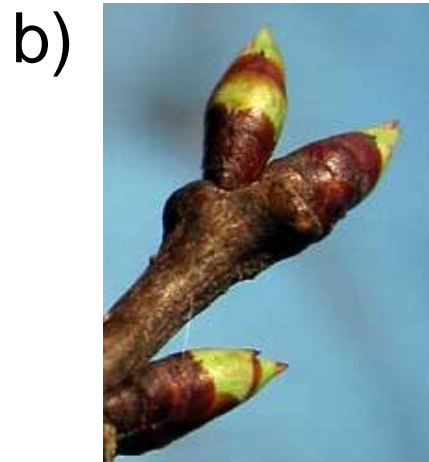
c) Mountainous, rocky soil

# 5. Identify This Specimen





A. Which of the following pictures show this tree's buds?



B. It is highly susceptible to

- a) Elm Leaf Beetle
- b) Japanese Elm Beetle
- c) Dutch Elm Disease
- d) Elm Leaf Disease

## 6. Identify This Specimen





A. Which of the following is false?

- a) The fruit is a shiny, oval red drupe.
- b) The leaf is arcuately veined.
- c) The red berries are edible.
- d) Its bark is among the thinnest of all eastern trees.
- e) None of the above.

B. This tree's flowers are

- a) Monoecious
- b) Dioecious
- c) Perfect
- d) Both (a) and (b)

# 7. Identify This Specimen

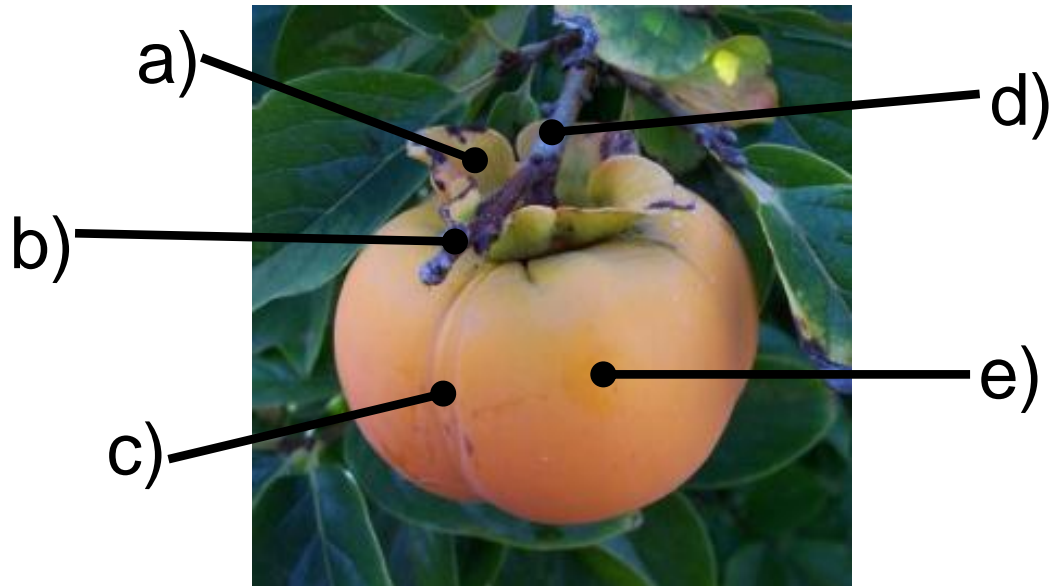




A. Which of the following is false about this tree's fruit?

- a) It is a globular berry.
- b) It is sour when unripe.
- c) Molasses can be made from the fruit pulp.
- d) It is high in Vitamin C.

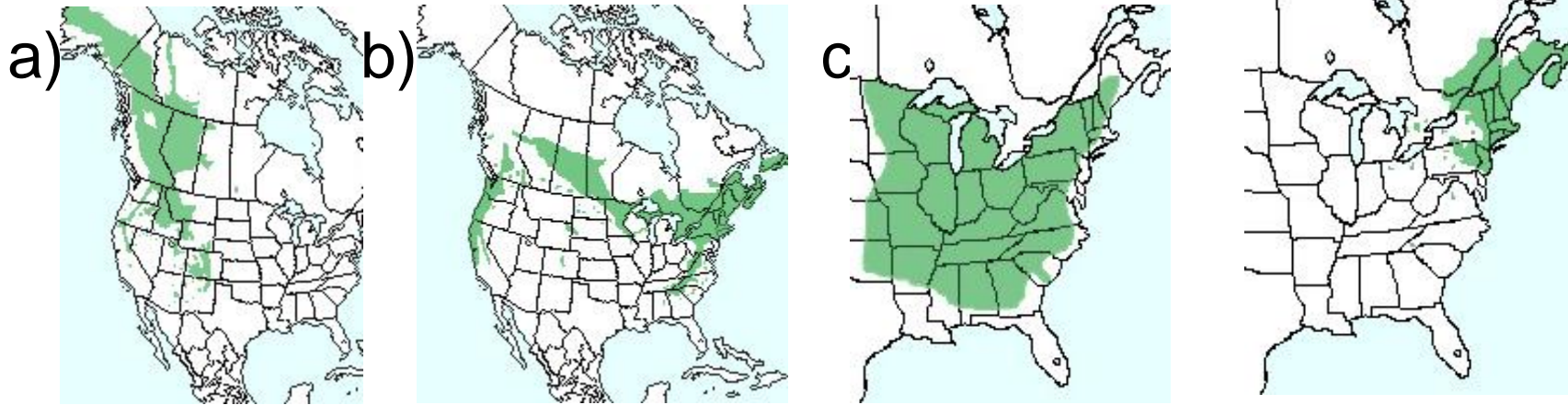
B. Which part is the calyx?



# 8. Identify This Specimen



A. Which of the following shows the correct range map for this tree?



B. Its leaves are:

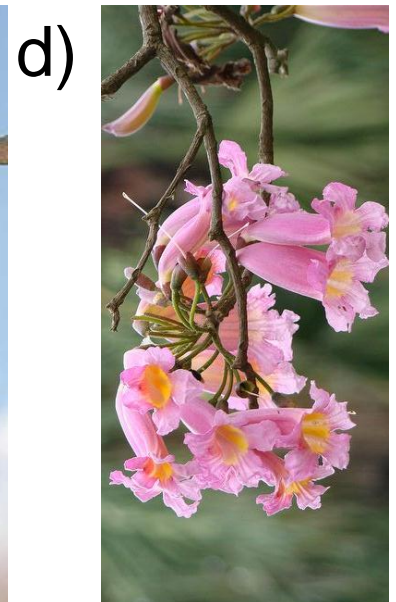
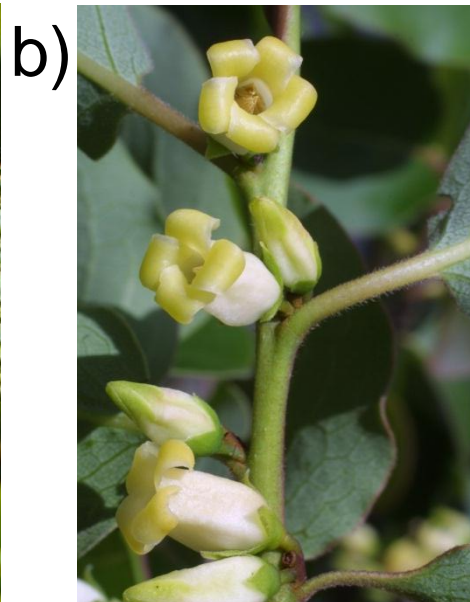
- a) Undulate
- b) Incised
- c) Serrulate
- d) Doubly Serrate



# 9. Identify This Specimen



A. Which of the following shows a picture of this tree's flowers?



B. The young bark of this tree has horizontal \_\_\_\_\_ on it.

# 10. Identify This Specimen





A. Which of the following best describes the fruit of this tree?

- a) Berry
- b) Drupe
- c) Samara
- d) Pome
- e) Pod
- f) Capsule
- g) Other

B. Name one way that the oil of this tree is used.

# 11. Identify This Specimen



A. Which of the following best describes the flowers of this tree?

- a) Arranged in salverform corollas of 3 lobes
- b) Arranged in salverform corollas of 5 lobes
- c) Arranged in campanulate corollas of 3 lobes
- d) Arranged in campanulate corollas of 5 lobes

B. List 2 uses for the bark of this tree



# 12. Identify This Specimen



A. The soil that it inhabits has approximately what pH range?

a) 3.5 – 4.0

b) 4.0 – 4.5

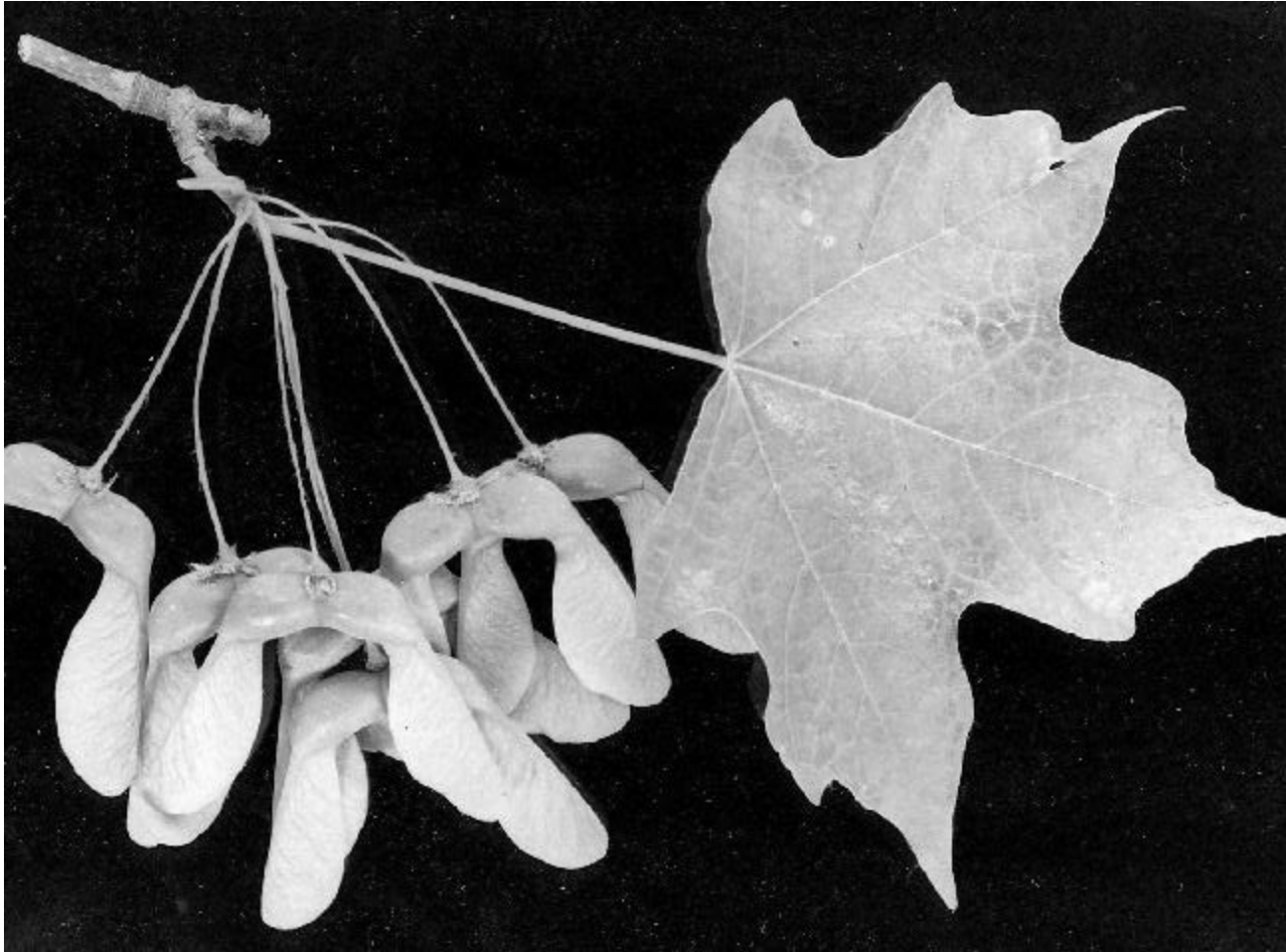
c) 4.5 – 5.0

d) 5.0 – 5.5

e) 5.5 – 6.0

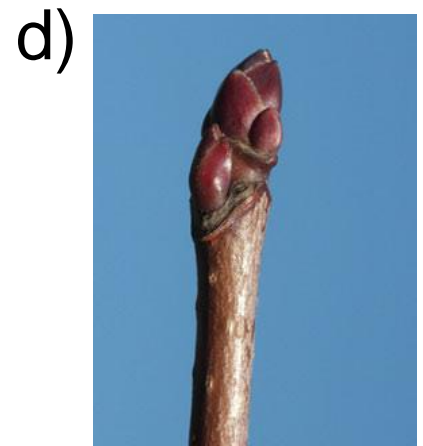
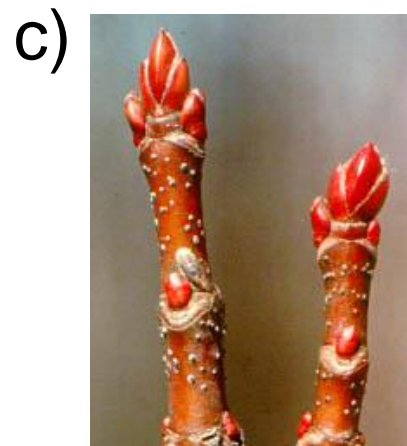
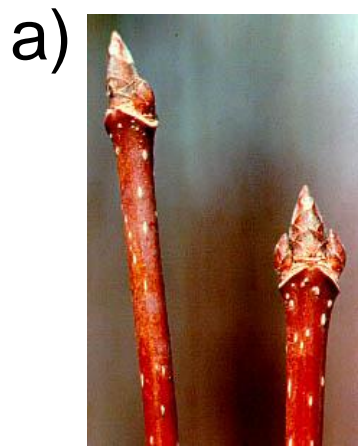
B. Why are male trees more popular in cities?

# 13. Identify This Specimen





A. Which of the following shows a picture of this tree's twig?



B. This tree is the primary source of what popular (edible) substance?

# 14. Identify This Specimen



A. Which of the following describes the fruit of this tree?

- a) Berry
- b) Drupe
- c) Samara
- d) Pome
- e) Pod
- f) Capsule
- g) Other

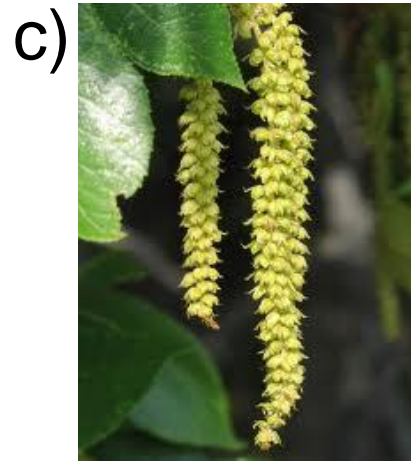
B. List 2 things the wood of this tree is used for.



# 15. Identify This Specimen



A. Which of the following pictures belong to this tree?



B. List one way to tell the difference between this tree and tree #13



# 16. Identify This Specimen





A. What kinds of land does this tree grow best in?

- a) Barren soils
- b) Acidic wetlands
- c) Snowy mountains
- d) Deciduous forests

B. What is the name of the bird that was named after this tree because it eats its berries?

# 17. Identify This Specimen



A. This tree is \_\_\_\_\_ and its fruit is a multiple of \_\_\_\_\_.

- a) Monoecious, capsules
- b) Monoecious, achenes
- c) Dioecious, capsules
- d) Dioecious, achenes

B. The leaves are the sole food source for larvae of which rare butterfly?



# 18. Identify This Specimen



A. Which of the following pictures show a male flower of this tree?

a)



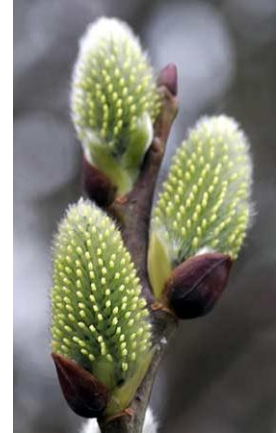
b)



c)



d)



B. How many seeds does this tree's fruit release from each capsule?



# 19. Identify This Specimen





A. Which of the following statements is true?

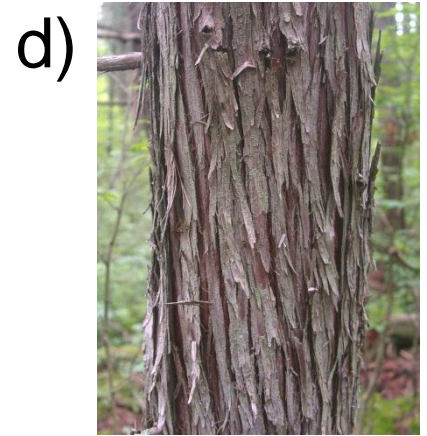
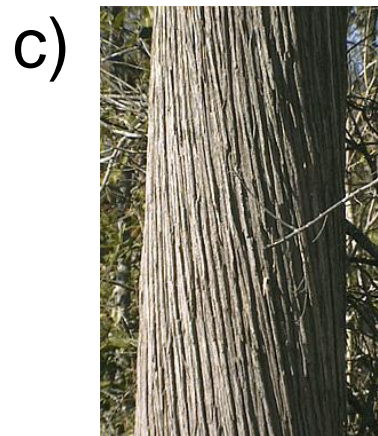
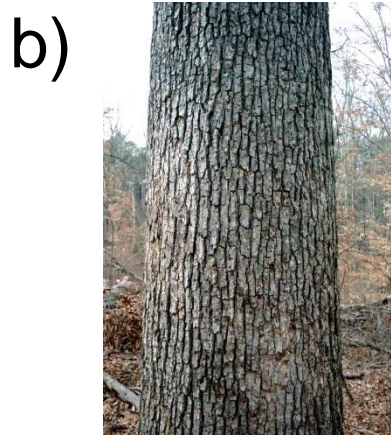
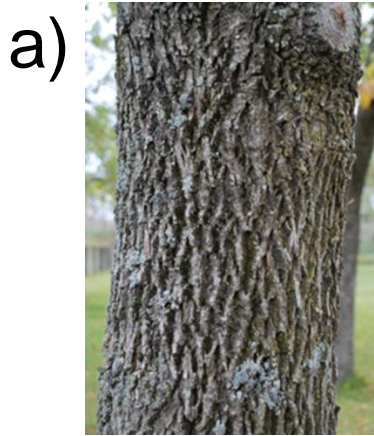
- a) The tree grows best on shallow, rocky lowland plains.
- b) It has one of the most useful woods for heavy construction.
- c) It has a very compressed columnar shape.
- d) The cap of its acorn stays firmly attached even at maturity.

B. How was this tree selected to be the official state tree of Illinois?

## 20. Identify This Specimen



A. Which of the following shows a picture of this tree's bark?

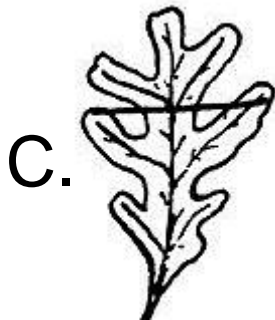
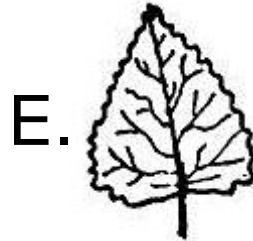
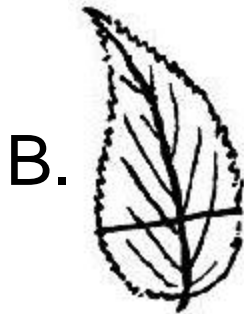


B. The leaf is very \_\_\_\_\_ when crushed.



# 21. Matching

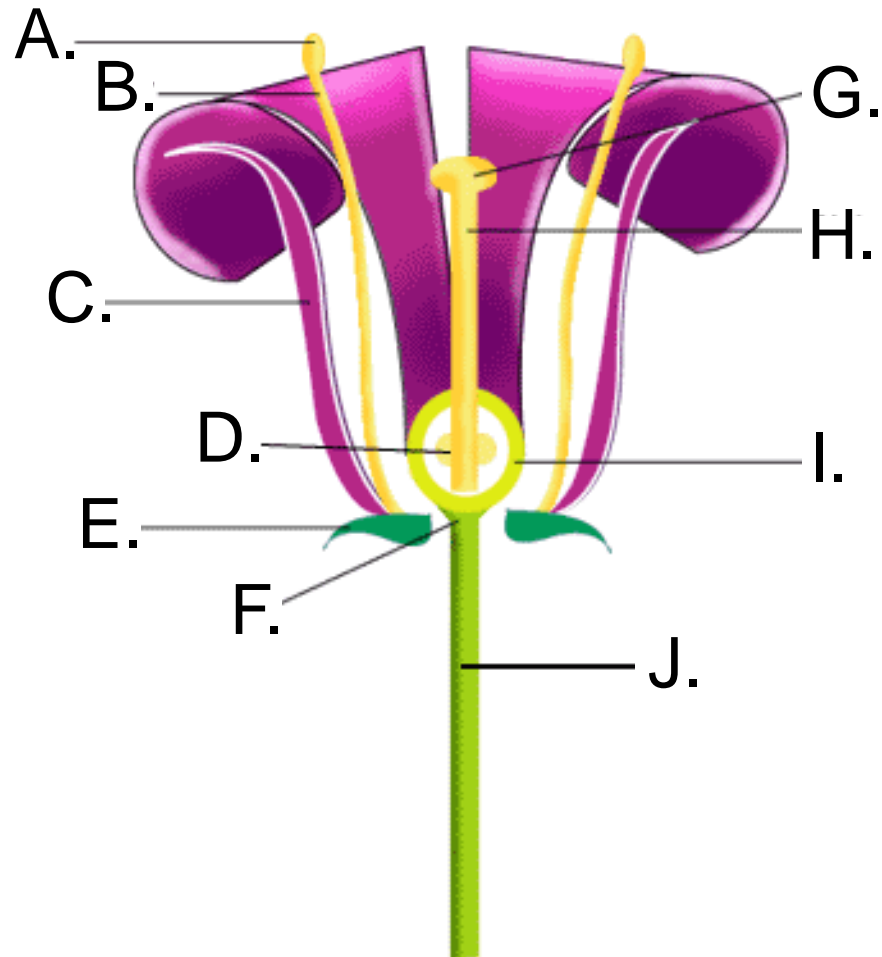
(6 points)



- a) Deltoid
- b) Elliptical
- c) Lanceolate
- d) Linear
- e) Obovate
- f) Ovate

# 22. Fill-In

(10 points)



# 23. Matching

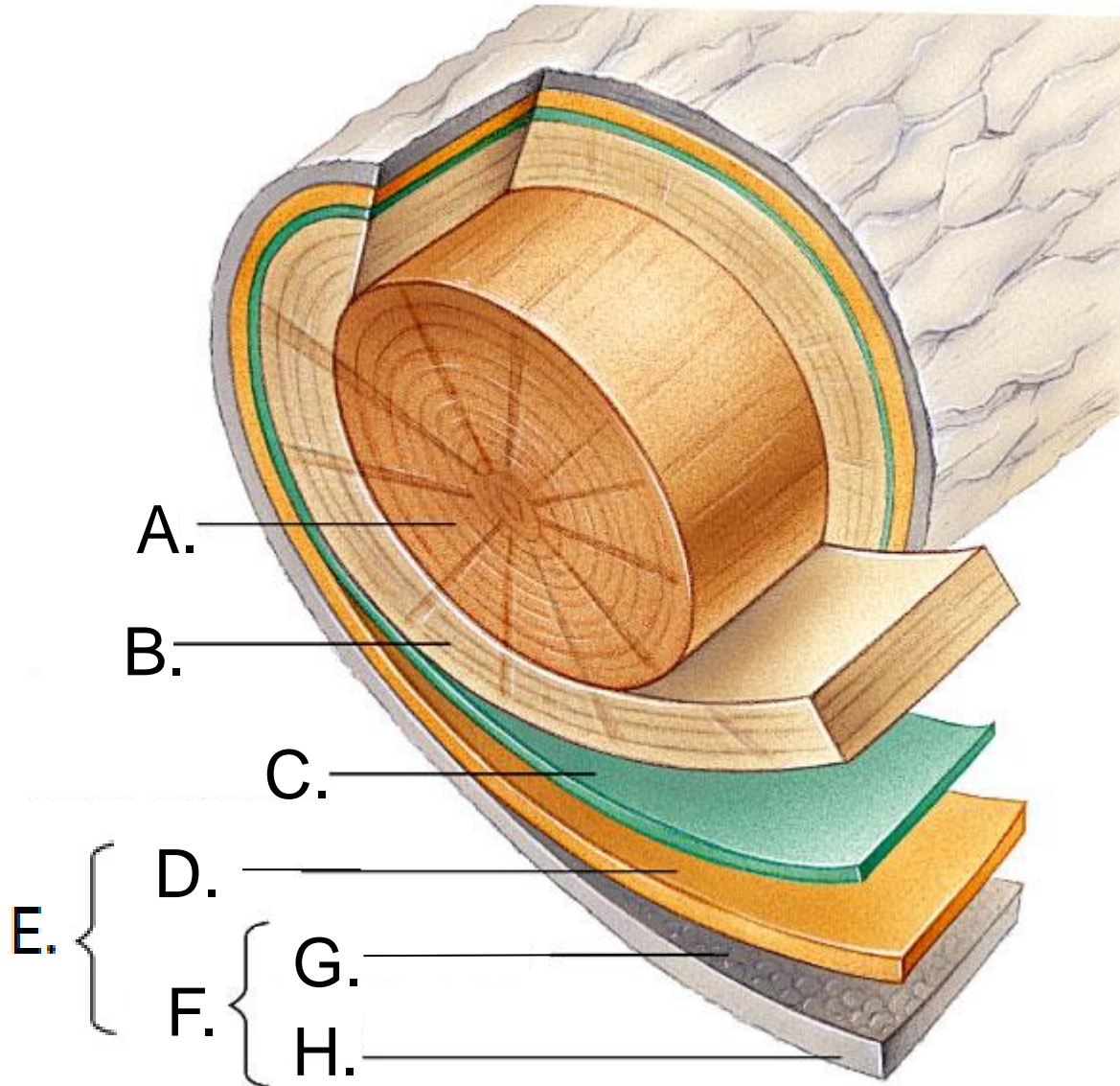
(7 points)

- |                  |  |
|------------------|--|
| A. Dioecious     | a) Usually green and leaf-like               |
| B. Hermaphrodite | b) Usually brightly-colored                  |
| C. Monoecious    | c) The male reproductive structures          |
| D. Petals        | d) The female reproductive structures        |
| E. Pistals       | e) Female and male on the same tree          |
| F. Sepals        | f) Female and male on separate trees         |
| G. Stamens       | g) Female and male organs on the same flower |



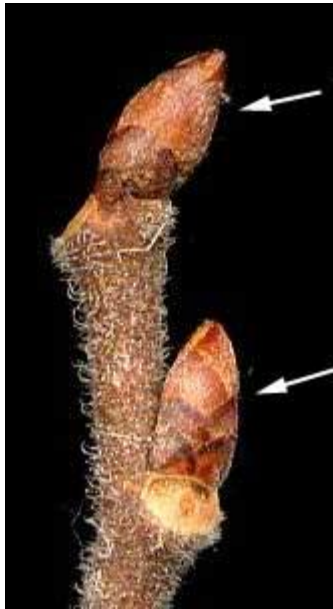
# 24. Fill-In

(8 points)



# 25. Matching

(7 points)



A.

B.

D.



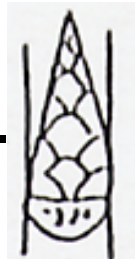
E.



C.



F.



G.



- a) Auxiliary Bud
- b) Conical
- c) Narrowly Conical
- d) Ovoid
- e) Rounded
- f) Superposed
- g) Terminal Bud





**That's it! Have a great day!**