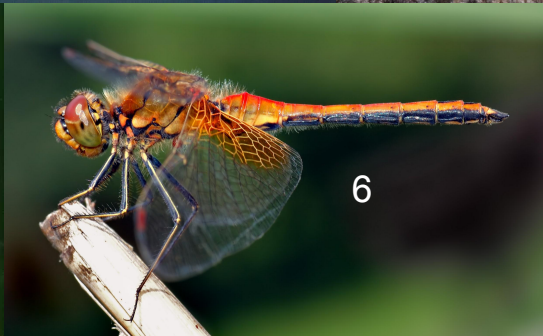


Entomology 2015 List Pics

Numerical Accordance to Official List

Numerical Accordance to Official List





13



14



15



16

photo by: E.S. Ross



17



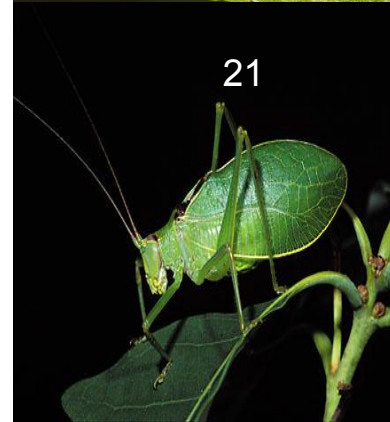
18



19



20



21



22

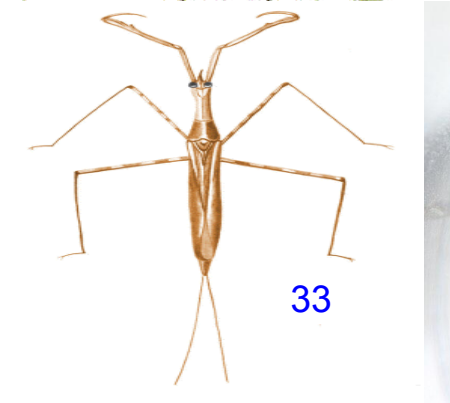
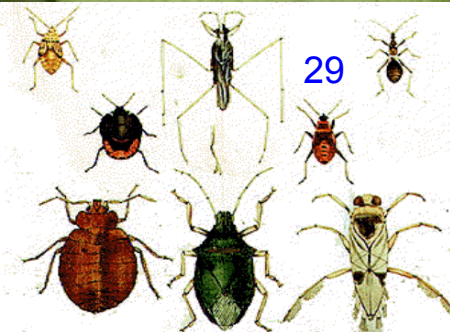
Photo by S...



23



24





37

38



39



40



41



42



43



44



45

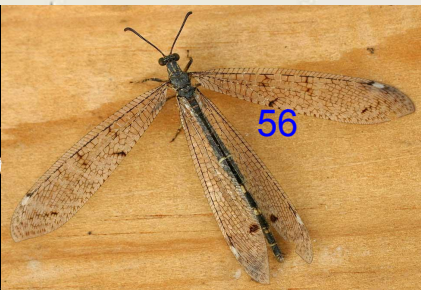
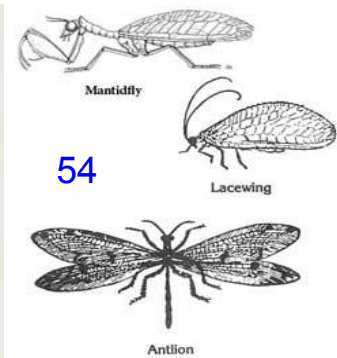


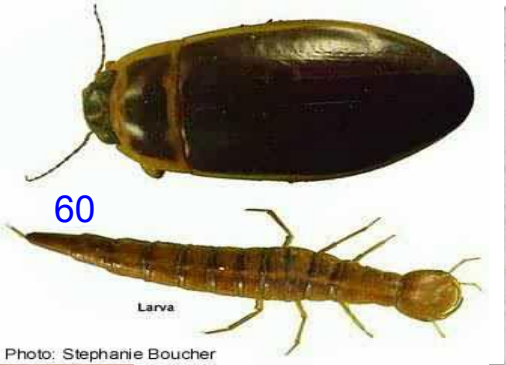
46

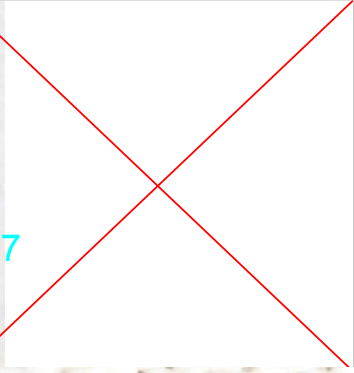


47









Coleoptera:
Chrysomelidae
(kry-so-MEL-i-dee)
leaf beetles, flea beetles

79

Colorado potato beetle

James L. Castner, U.Fla. Ent. Dep.

- Elongate to oval shaped beetles, 1–16 mm in length
- Antennae generally less than 1/2 the length of body
- Tarsi generally appear 4-4-4, actually 5-5-5





82



83

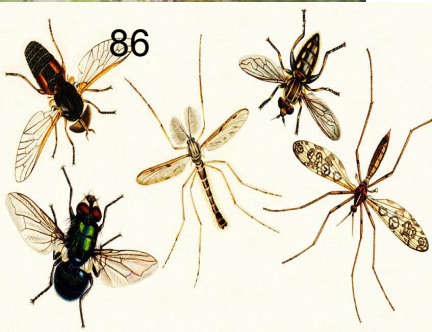
©PIOTR NASKRECKI 2011



84



85



86



87



88



89



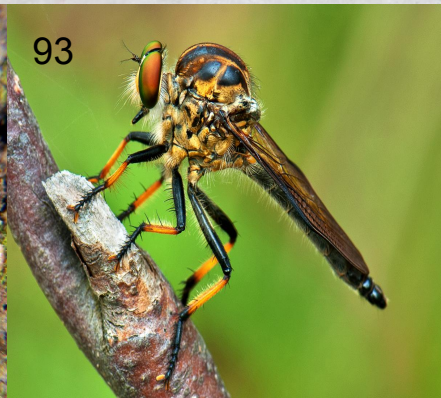
90



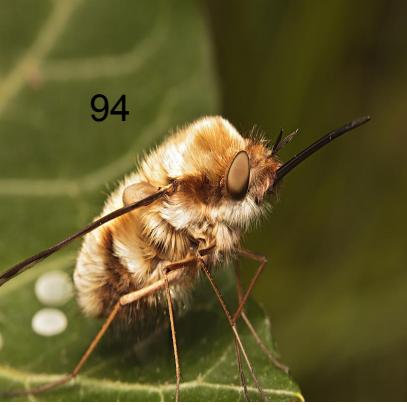
91



92



93



94



95



96



97

© Stephen Cresswell



House Fly
Musca domestica
14 mm wingspan

98



99

© Jan Schabert
www.NATURFOTO.cz



100

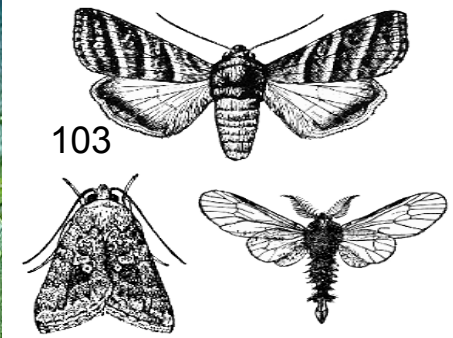
© Martin Heigan



101



102



103



104



105



106

Hafiz Issadeen



107



Lepidoptera: Pieridae

(pee-AIR-ri-dee)
whites, sulfurs, orangetips

108



Orange sulfur



Cabbage white

• Usually bright yellow, orange or white, marked w/black

Falcate orangetip



Lepidoptera: Lycaenidae

(lye-SEEN-ni-dee)
coppers, hairstreaks, blues



American copper



Tailed blue

• Small, delicate, brightly colored.
• Antennae ringed w/white
• White scales encircling eyes



Olive hairstreak

Lepidoptera: Nymphalidae
(ny-m-FAL-lee)
brushfooted butterflies, fritillaries

Great spangled fritillary



Gulf fritillary



Viceroy



111



112



113

• Front legs reduced, lack claws, not used in walking



114



115



116



117



118

