

Health Science Skeletal Questions

Multiple Choice

1. The axial skeleton consists of:
 - a. the vertebral column and skull
 - b. upper limbs, lower limbs, and pelvic girdle
 - c. the skull, vertebral column, and bony thorax (ribs and sternum)
 - d. the bony thorax, upper limbs, and pelvic girdle
2. The hyoid bone is the only bone that:
 - a. protects the elbow
 - b. is vestigial and serves no purpose in the body
 - c. forms the tailbone
 - d. does not articulate with any other bone
3. Bones united by fibrous tissue, such as the sutures in the skull, are
 - a. synovial joints
 - b. cartilaginous joints
 - c. fibrous joints
 - d. diarthroses
4. Which joint contains articular cartilage, a fibrous articular capsule, a joint cavity, and reinforcing ligaments?
 - a. synovial joints
 - b. cartilaginous joints
 - c. fibrous joints
 - d. syndesmoses
5. Bones serve all of the following functions except:
 - a. support, protection, and movement
 - b. transportation of substances
 - c. storage
 - d. blood cell formation
6. Articular cartilage
 - a. connects muscle to bone
 - b. provides a smooth, slippery surface that decreases friction at joint surfaces
 - c. holds the bone in place
 - d. holds the joint together
7. Which of the following is incorrect?
 - a. The adult medullary cavity contains yellow marrow.
 - b. The infant medullary cavity contains yellow marrow.
 - c. The infant medullary cavity contains red marrow.
 - d. The adult medullary cavity contains adipose tissue.

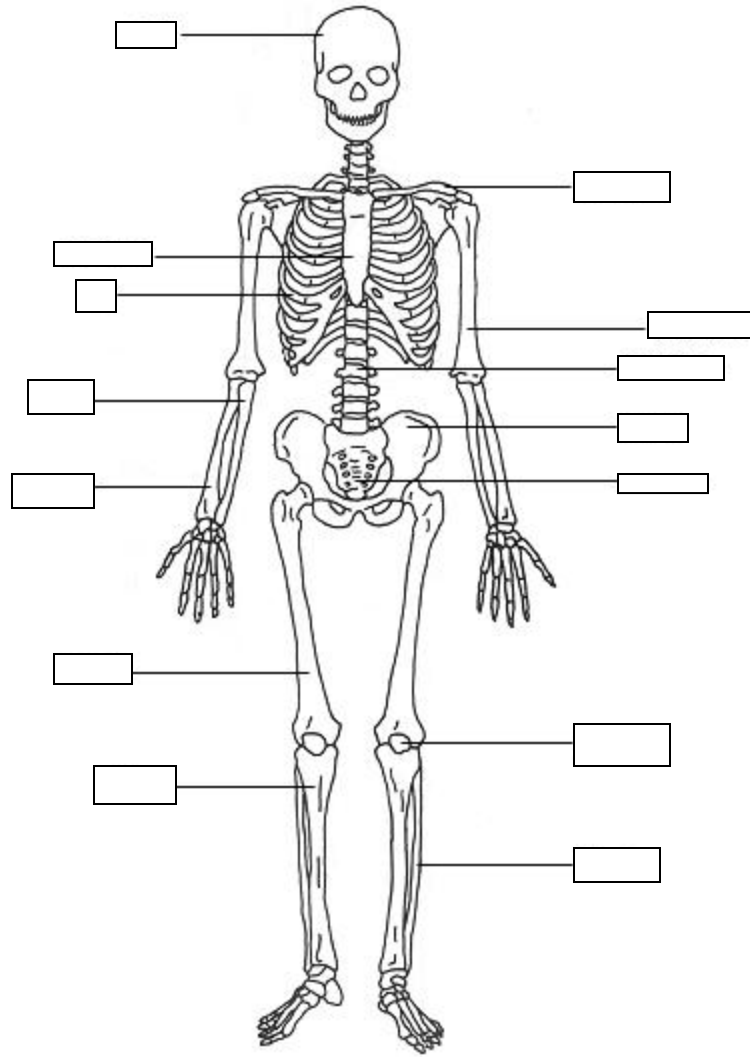
Matching:

8. biaxial, has both convex and concave areas, carpometacarpal joints of the thumb
9. multiaxial, shoulder and hip
10. nonaxial, intercarpal joints of the wrist
11. uniaxial, angular movement in one plane, elbow
12. biaxial, allow movement from side to side and back and forth, but cannot rotate on long axis, knuckle joints
13. uniaxial, can only turn on long axis, proximal radioulnar joint

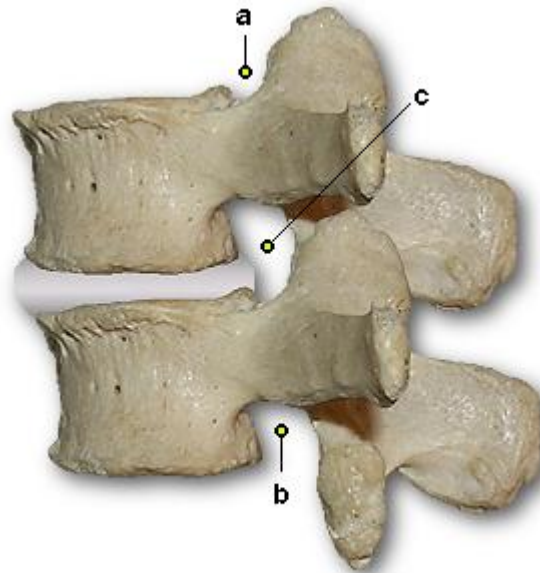
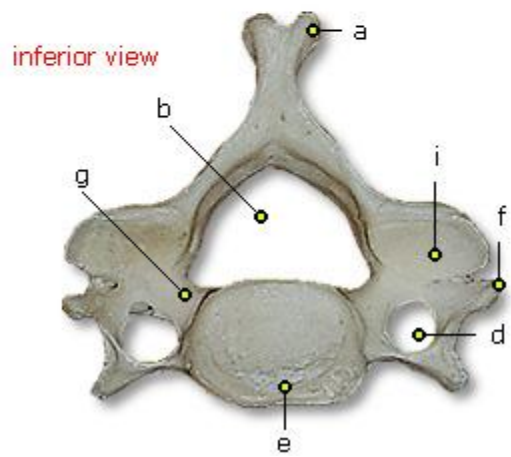
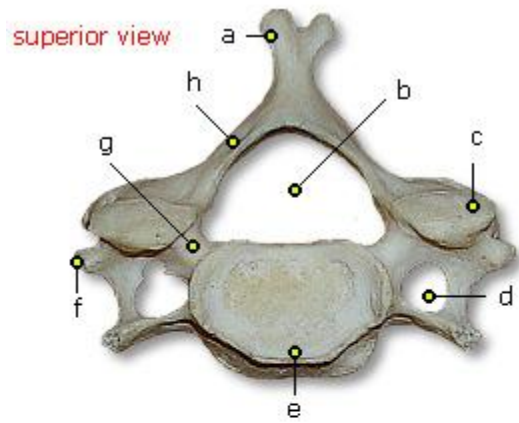
- a. plane joint
- b. hinge joint
- c. saddle joint
- d. ball-and-socket joint
- e. pivot joint
- f. condyloid joint

Labeling:



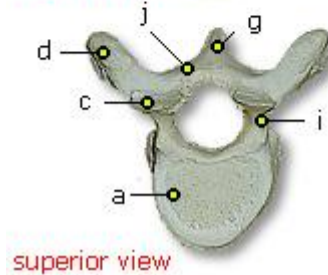
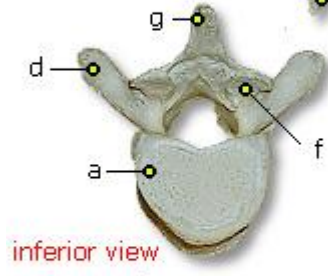
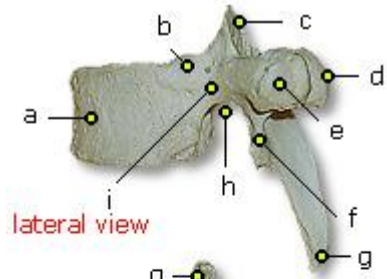


Please label the follow cervical, thoracic, or lumbar



14. _____

15. _____



16. _____

Health Science Skeletal Questions Key

Multiple Choice

1. c

2. d

3. c

4. a

5. b

6. b

7. b

Matching:

8. c

9. d

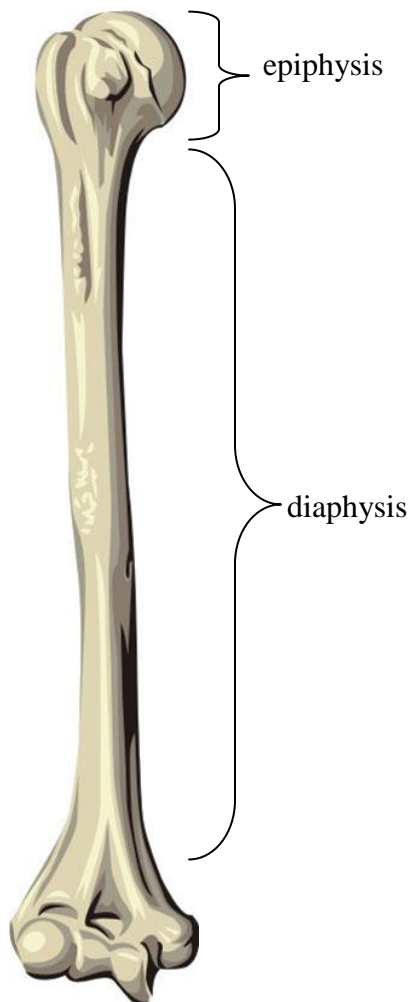
10. a

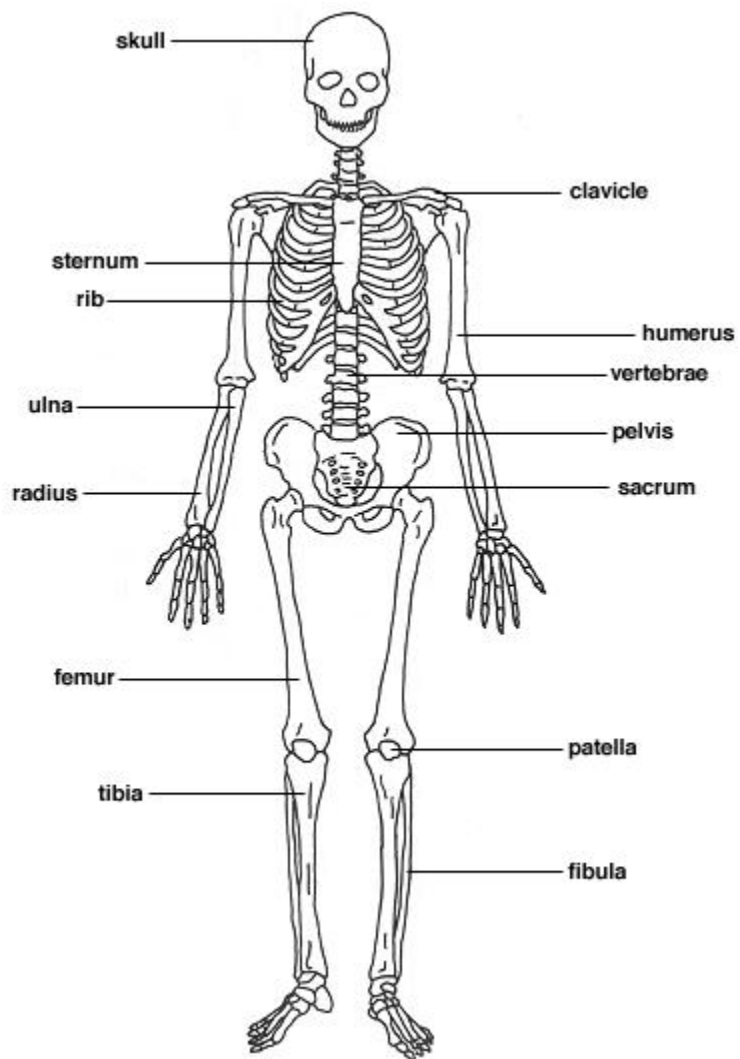
11. b

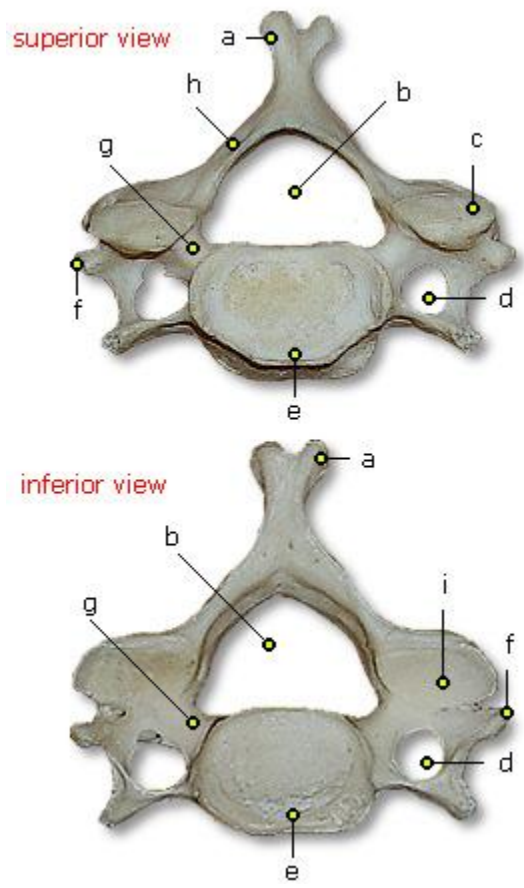
12. f

13. e

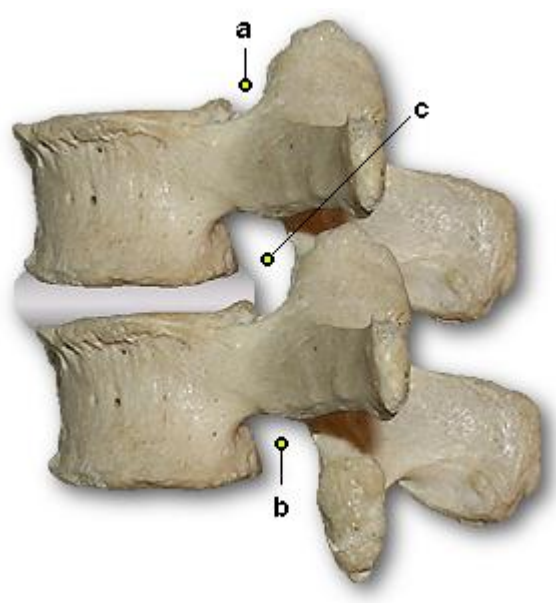
Labeling



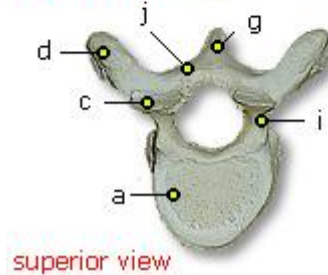
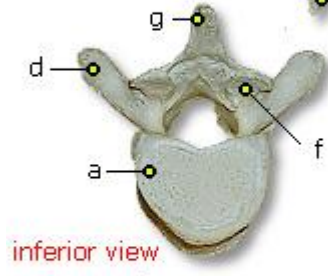
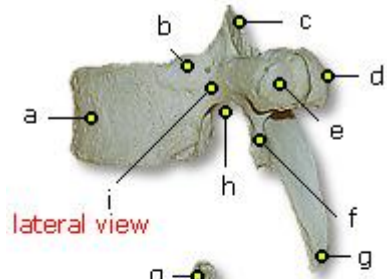




14. cervical



15. lumbar



16. _thoracic_____