

Identification part

1. Identify the order



2. Identify the family



3. Identify the family



4. Identify the family



5. Identify the family



6. Identify the family



7. Identify the family



8. Identify the family



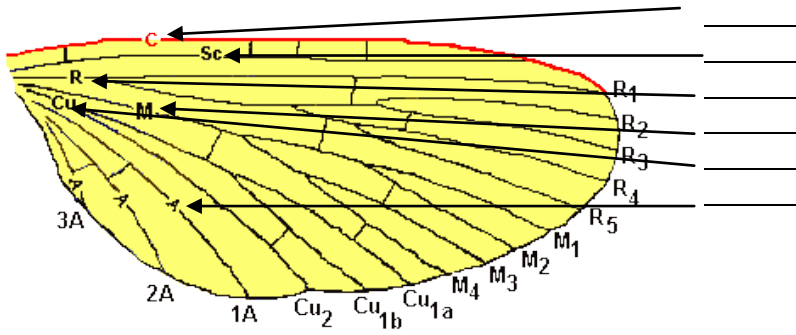
9. Identify the family



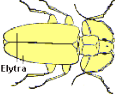
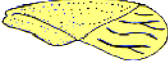
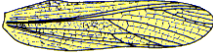
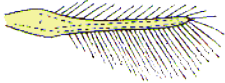
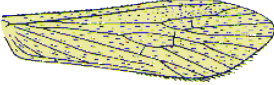

10. Identify the family





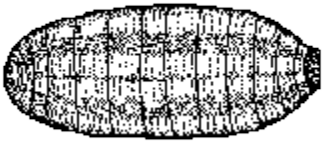
Label the parts of Wing Venation



Wing types

Name the wing type	Appearance
	
	
	
	
	
	

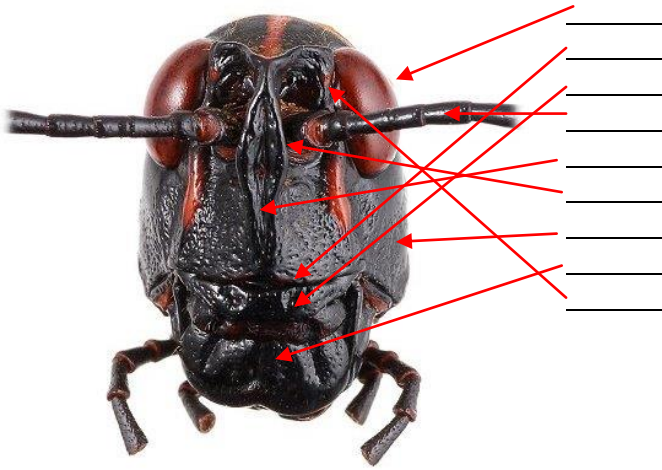
Identify the Pupal Types

<i>Appearance</i>	<i>Pupal Type</i>	<i>Examples</i>
		
		
		

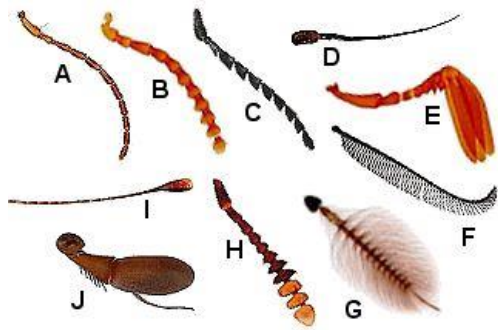
What body parts develop from each Insect germ layers?

Ectoderm:	
Mesoderm:	
Endoderm:	

Label the Insect Head parts



Identify the different Antennae Types



- A.
- B.
- C.
- D.
- E.
- F.
- G.
- H.
- I.
- J.