

MICROBE MISSION

November 4th Scrimmage



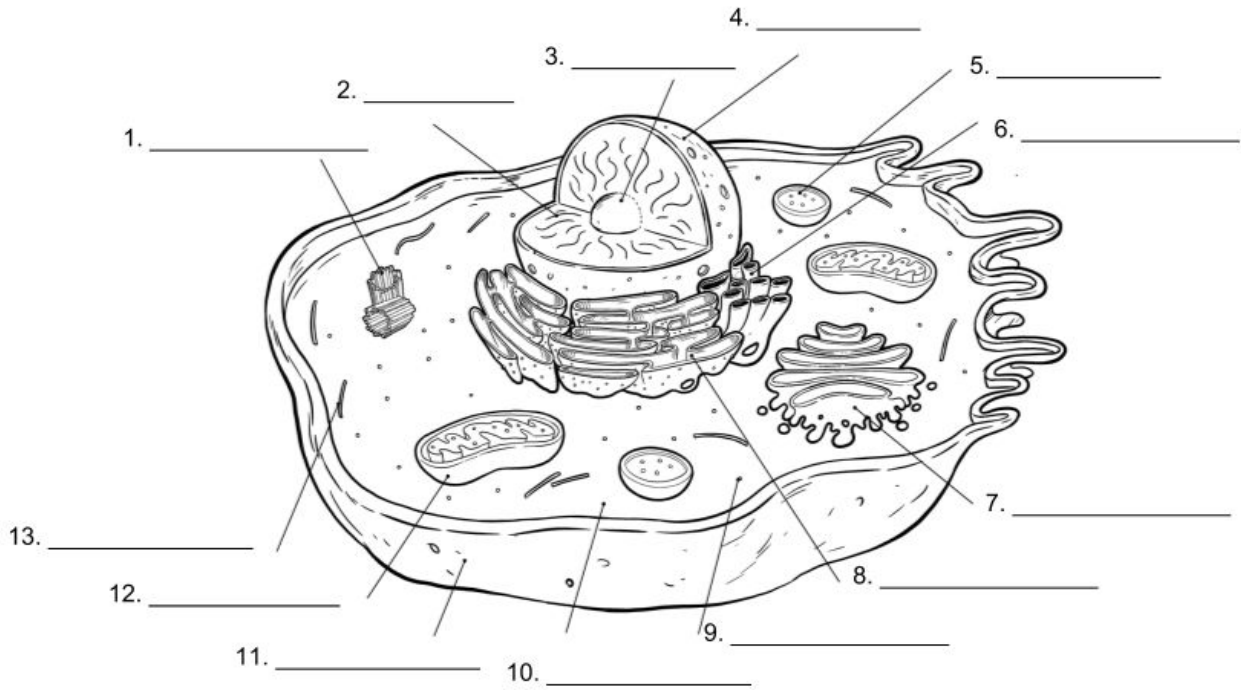
Exploring the World of Science

Name: _____
School: _____

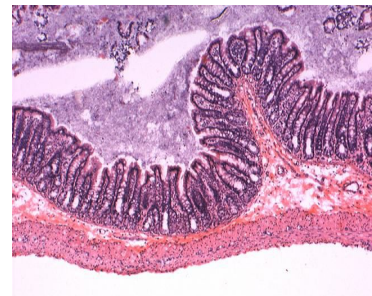
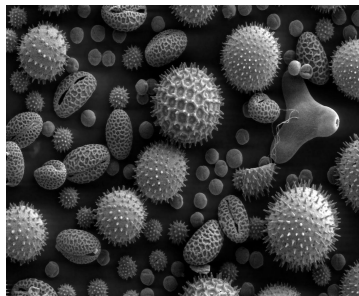
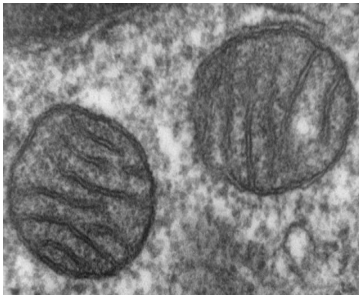
Directions: DO NOT open the packet until prompted to.
The test will be a 50 minute test and answer each question
to the best of your ability.

Total: _____/83

Label the parts of this cell:



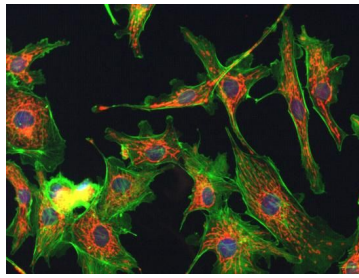
Determine which microscope produces which image:



14. _____

15. _____

16. _____



17. _____

18. _____

Order the following from smallest to largest (1-7):

- 19. Rhinovirus _____
- 20. Prion _____
- 21. Red blood cell _____
- 22. Cyanobacteria _____
- 23. Paramecium _____
- 24. Small pox virus _____
- 25. Amoeba _____

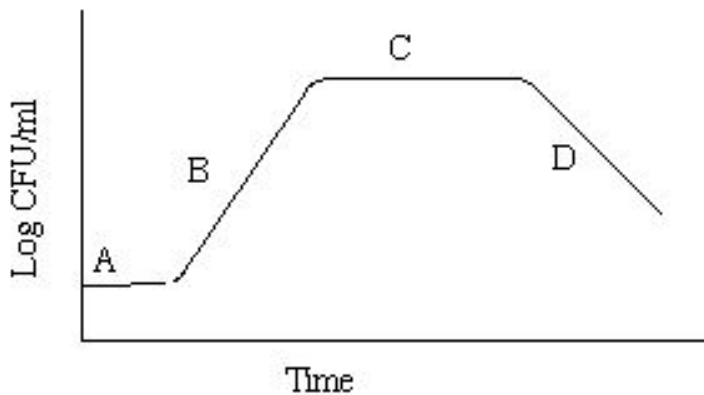
26. Name a symbiotic bacteria in your gut:

27. You look through a microscope and see a bacteria that looks like it's moving SE. What direction is it actually moving?

28. Which part of a light microscope controls how much light is projected into the slide?

29. List 3 pieces of evidence for the endosymbiotic theory.

30. Label the four stages of bacterial growth in this graph



- A. _____
- B. _____
- C. _____
- D. _____

What type of microbe are the following?

31. Ebola _____

36. Ringworm _____

32. Thrush _____

37. Naegleria _____

33. Kuru _____

38. MRSA _____

34. Rubella _____

39. Chlamydia _____

35. Polio _____

40. Trichinosis _____

Draw the following microbial shapes:

41. Diplococci

42. Vibrio

43. Coccobacillus

44. Spirochete

45. Sarcina

46. Streptobacilli

47. What is significant about the genetic makeup of influenza that makes it difficult to accurately vaccinate for? Explain.

48. Name 5 characteristics of prion caused diseases.

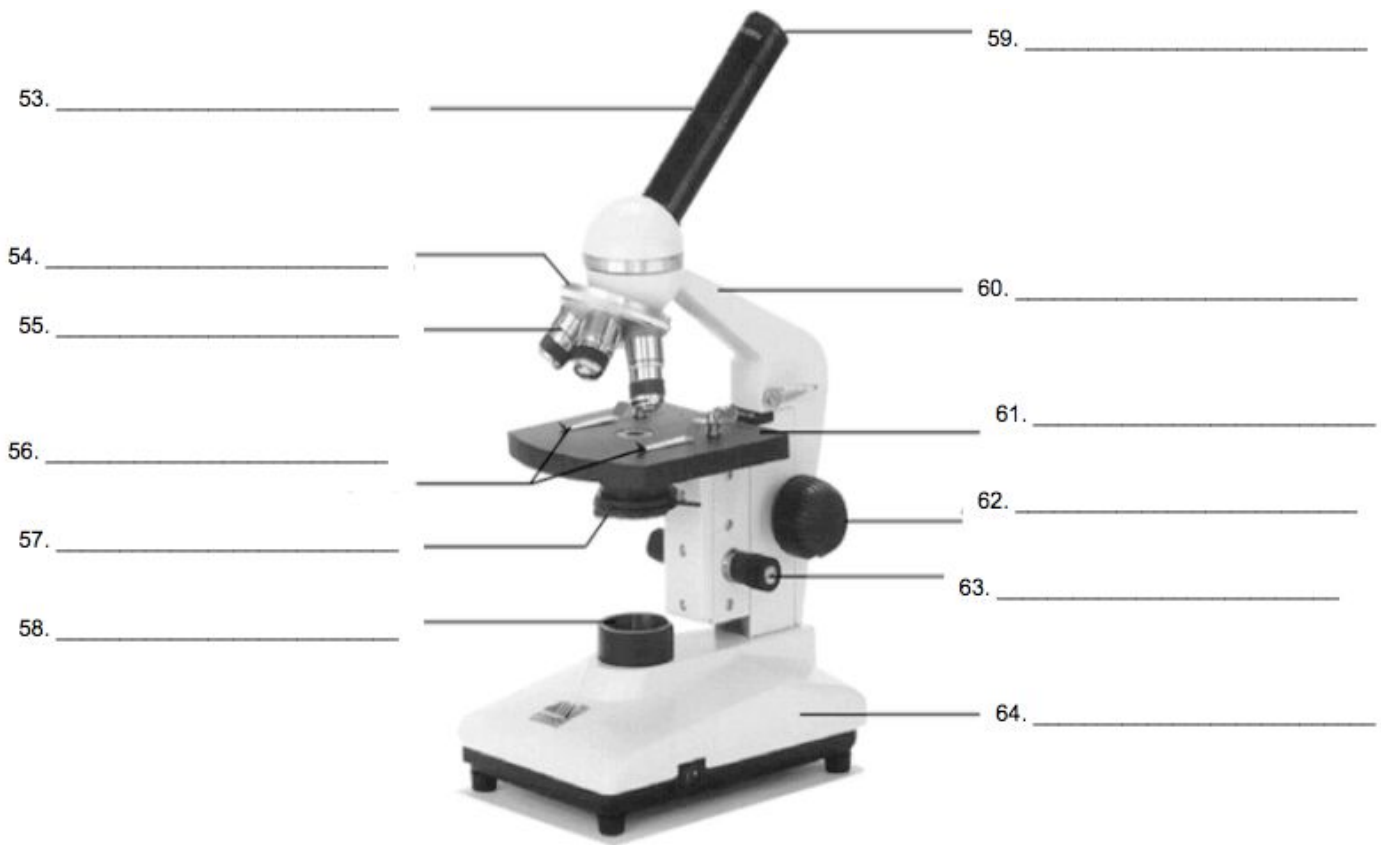
49. Name a difference between the cell walls of bacteria and archaea.

50. List 2 differences between prokaryotic and eukaryotic organisms.

51. Over _____% of microorganisms contribute to the quality of human life

52. What is the word prion short for?

Label the parts of the light microscope below:



65. Which part of the do you use to change magnification?

Determine what type of genetic makeup the following have (DNA, RNA, none, etc.)

66. Influenza _____

67. Kuru _____

68. HIV _____

69. Ebola _____

70. Malaria _____

71. Zika _____